



A NEW WAY TO SCAN THE WORLD



FJD Trion™ S1
3D LiDAR Scanner

A NEW WAY TO SCAN THE WORLD

A new way to "look" at the world around you.

With 320,000 points per second, S1 catches high-quality scans hands down.

With industry-leading SLAM algorithm, S1 captures, processes, and displays accurate point clouds on the mobile terminal in real time.



320,000
Points Per Second



0.8-2cm
Accuracy



16
Sensors



120M
Range



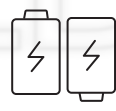
Real-Time
Point Cloud



Indoor & Outdoor
Scanning



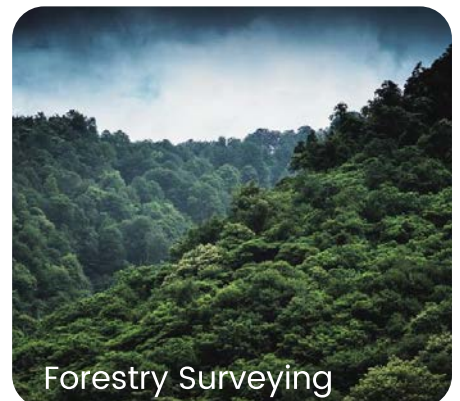
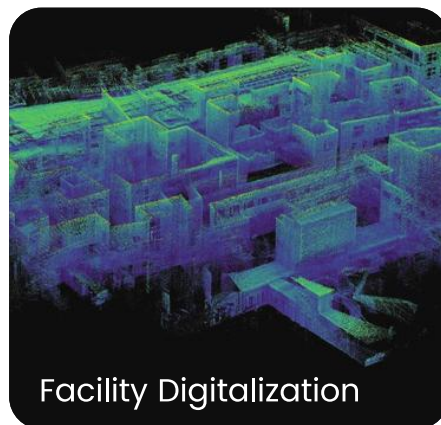
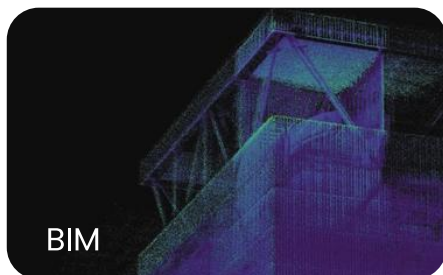
Lightweight
and More Portable



Dual Battery
Hot-Swappable

APPLICATION SCENARIOS

Indoor, outdoor, and even underground without a GNSS receiver.



AS VERSATILE AS IT IS PORTABLE

Lightweight design for easy portability.

Real-time point cloud display and SLAM processing.



YOUR POINT CLOUD STUDIO



TRION SCAN

Real-time Visualization of 3D Point Cloud Software

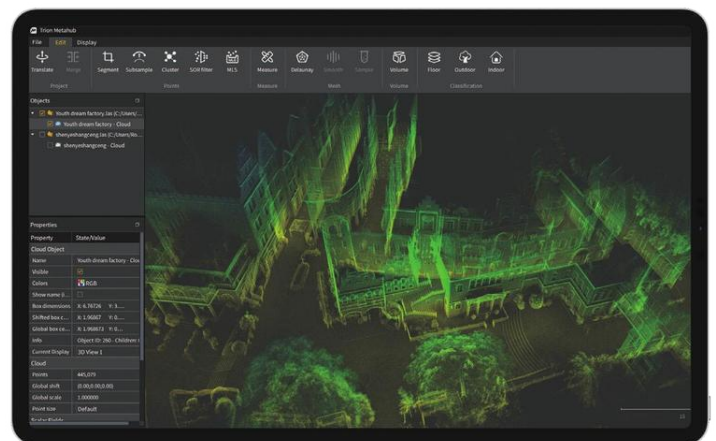
- Displays the scanned project files, storage capacity, and battery life
- Visualizes the point cloud in real time
- Tracks real-time path
- Manages and downloads project files

TRION METAHUB

Point Cloud Post-Process Software

- Denoises and colorizes point clouds
- Stitches point clouds, maps shadow, transforms coordinates, and does automatic plane fitting
- Classifies point clouds, produces 2D drawings*, and builds 3D models*

*Coming soon



SPECS

Range

120m

Sensors

16

FOV

360°×270°

Laser Class

Class 1/λ 905nm

Points per Second

320,000

Accuracy

0.8 ~ 2 cm

Display

Real-time preview on mobile terminal

Processing

Real-time

Datalogger Weight (incl. single battery)

2.2kg

Carrier

Backpack or shoulder strap

Battery Life (Dual battery)

4 hours

Scanner Weight

1.8kg

Ingress Protection

IP54

Storage Capacity

512 GB



Free Quote: sales.global@fjdynamics.com

Address: 15 SCOTTS ROAD #03-12, Singapore

[FJDynamics.com](https://www.fjdynamics.com) 🔍



CREATE FOR A BETTER WORLD

Copyright © 2022 FJDynamics. All rights reserved.